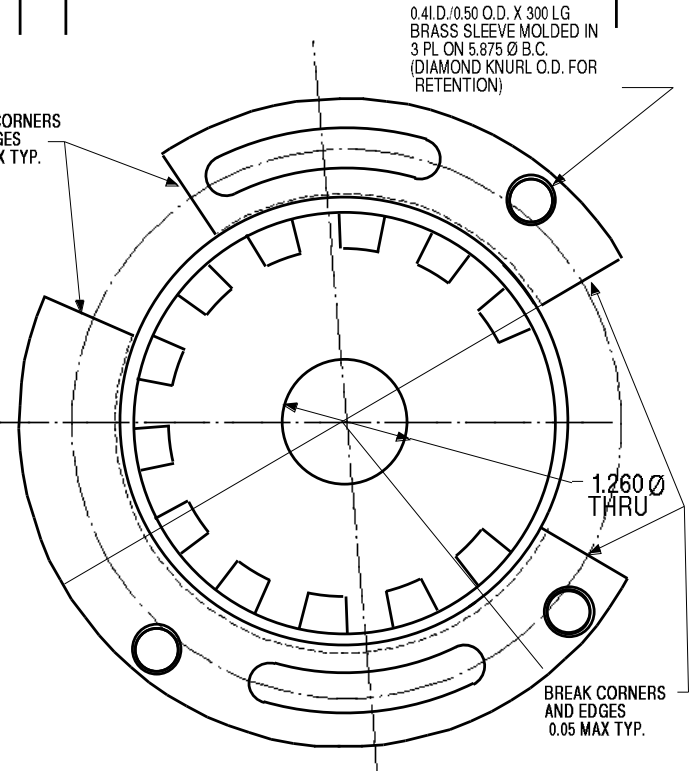
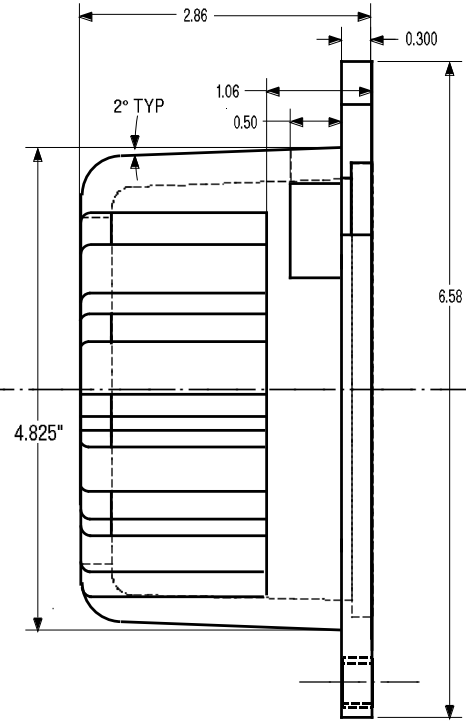
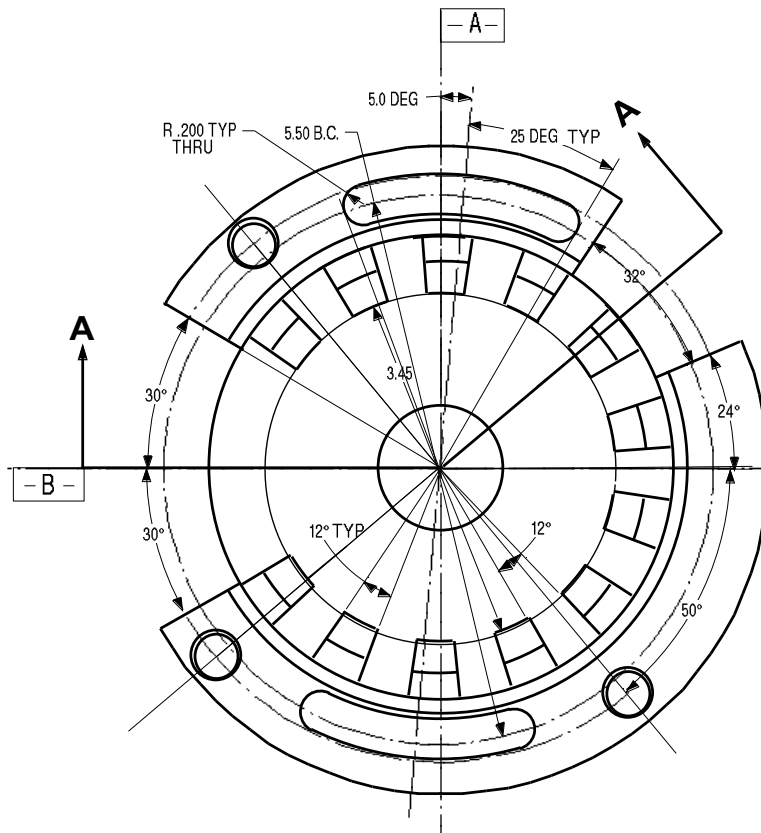
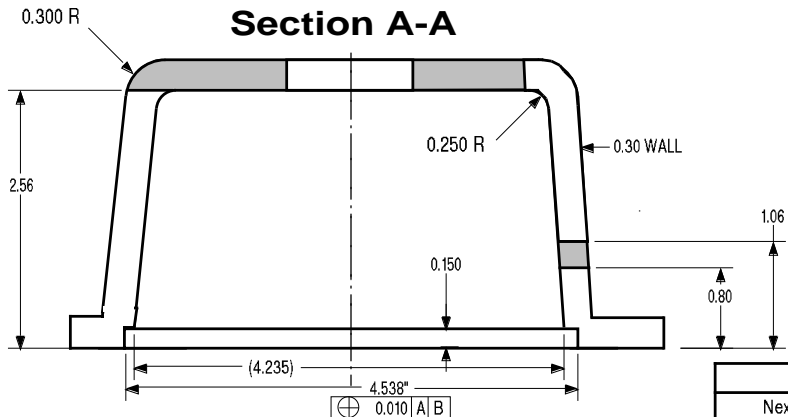


Ltr	Revision	Date



Section A-A



NOTES:

- 1) UNLESS OTHERWISE SPECIFIED, ALL FILLETS AND RADII SHALL BE .06 R MAX.
- 2) MAT'L: ABS, COLOR: BLACK
- 3) BRASS SLEEVES TO BE MOLDED INTO LOCATIONS SHOWN AND TO BE FREE OF FLASHING.
- 4) ALL HOLES PATERNS ARE LOCATED $(\oplus 0.014 | A | B)$
- 5) 2° DRAFT TYPICAL ON ALL INTERNAL AND EXTERNAL WALLS

MOLD EJECTOR PINS ON THIS SIDE ONLY

All drawings and specifications are and remain the property of BEI Motion Systems Company. All specifications are confidential and are not to be disclosed to any persons other than those to whom they are sent. No drawings, specifications or other data belonging to BEI Motion Systems Company which may be furnished to manufacturers or others for any purpose are to be regarded by implication or otherwise as in any manner licensing the holder or any other person or corporation or conveying any rights or permission to manufacture, use or sell any patented invention that may in any way be related thereto

Unless otherwise specified: Dimensions are in inches. Tolerances: XXX = .005 A° = ± 0.5° XX = ± 0.1
Material
Finish
Next Assy
Used on

BEI INDUSTRIAL ENCORDER DIVISION
BEI TECHNOLOGIES, INC.
 7230 Hollister Avenue • Goleta, CA 93117-2891 • Tel: (805) 968-0782 • Fax: (805) 968-3154

Drawn R. Bronson	HS 35 PROTECTIVE COVER	Code Ident. No.	Dwg. No.	Rev.
App'd		64127	924-23145-001	
Scale 80%				